

aladdin[®]
Scientific



Indicator

The color master of the microcosm

www.aladdinsci.com

Introduction

A chemical indicator is a special chemical substance that is widely used in chemical experiments to indicate the progress of a chemical reaction, the end point, or the properties of a solution. These indicators provide information about reaction conditions or the state of the solution through changes in color, fluorescence emission, or other changes in physical properties.

The choice of indicator depends on the specific needs of the experiment and the type of chemical reaction being studied, according to function and use, commonly used indicators are divided into the following categories:

pH indicator

- Used to indicate the acidity and alkalinity of the solution. They change color when the pH of the solution changes, which helps determine the end point of the reaction or the pH of the solution.
- Common acid-base indicators include phenolphthalein, methyl orange, bromophthalein blue, etc.

REDOX indicator

- Used to indicate the course or end point of a REDOX reaction. They often interact with specific oxidants or reducing agents, resulting in a color change.
- Common REDOX indicators include methylene blue, sodium diphenylamine sulfonate, potassium ferricyanide, etc.

Metal ion indicator

- Used to indicate the presence and concentration of specific metal ions. They often form colored complexes with specific metal ions, thus helping to determine the presence and concentration of metal ions.
- Common metal ion indicators include chromium black T, calcium indicators, aluminum reagents, etc.

Fluorescent indicator

- Fluoresces under certain conditions and can be used to detect certain ions or molecules.
- Some fluorescent dyes can bind to specific ions or molecules, thereby changing their fluorescent properties.

Chemical indicators are indispensable tools in chemical experiments, they provide intuitive color changes or other physical property changes, so that we can accurately judge the process and results of chemical reactions, so as to promote the development and application of chemical science.



pH Indicator

Item No.	Product	CAS	Specification/Purity	Package
T162316	3',3'',5',5''-Tetraiodophenolphthalein	386-17-4	>95.0%(HPLC)(T)	1g/5g/25g
N396567	3-Nitrophenol	554-84-7	96%	10g
N111089	α -Naphtholphthalein	596-01-0	Indicator	1g/5g/25g
N299244	α -naphthol phthalide indicator	596-01-0	0.1% in 50% Ethanol	100mL
T433770	Thymol blue	76-61-9	Indicator, ACS, Reag. Ph Eur	1g/5g/25g
T299395	Thymolblue-Phenolphthalein indicator	76-61-9	Indicator	100mL
T104284	Thymolphthalein	125-20-2	Indicator	5g/25g/100g/500g
P305732	Phenol red	143-74-8	Ind	25g/100g/500g
P102680	Phenol red sodium salt	34487-61-1	AR	1g/5g/25g/100g
P196505	Phenol red indicator	143-74-8	1% (w/v) in water	500mL
B355112	Benzyl Orange	36402-77-4	-	1g/5g
B109621	Brilliant Yellow	3051-11-4	Indicator	1g/5g/25g
X111168	Xylenol Blue	125-31-5	Indicator	1g/5g/25g/100g/500g
N130840	p-Nitrophenol	100-02-7	0.25% in Water, for pH Determination	100mL/500mL
X299243	Xylenol Blue Indicator	125-31-5	0.05%	100mL
P432099	Phenol red	143-74-8	Indicator, ACS	5g/25g/100g/1kg
P108714	Phenolphthalein	77-09-8	pH indicator	25g/100g/500g
P299393	Phenolphthalein-Nile Blue indicator	77-09-8	Indicator	100mL
C100174	Congo red	573-58-0	Indicator	5g/25g/100g/500g
C196465	Congo red indicator	573-58-0	1% (w/v) in water	500mL
S196523	Sulfo orange	547-57-9	Aqueous solution (aniline yellow) 0.1% (w/v)	500mL
C100242	Cresol red	1733-12-6	Indicator	25g/100g/500g
C121939	Cresol Red sodium salt	62625-29-0	Indicator	1g/5g/25g/100g
C196467	Cresol red indicator	1733-12-6	0.2% (w/v) in water	100mL/500mL
M276575	Methyl red	493-52-7	95%	25g
M102297	Methyl Red sodium salt	845-10-3	ACS reagent, 95 %	5g/25g/100g/500g

Item No.	Product	CAS	Specification/Purity	Package
M112775	methyl violet	8004-87-3	Indicator (pH 0.1-2.0)	25g/100g/500g
C112776	m-Cresol purple	2303-01-7	Indicator	1g/10g/50g/250g
M194266	m-Cresol purple Sodium salt	62625-31-4	Indicator	1g/5g/25g/100g
M196489	m-Cresol purple indicator	2303-01-7	0.1%(w/v) in water	500mL
C432890	Crystal violet	548-62-9	Indicator, ACS, Reag. Ph Eur	25g/100g/1kg
C196470	Crystal violet indicator	548-62-9	1% in Acetic Acid	100mL
C305618	o-Cresolphthalein	596-27-0	Ind	1g/5g/25g/100g
C104980	Chlorophenol red	4430-20-0	Indicator	1g/5g/25g
C196480	Chlorophenol red indicator	4430-20-0	0.04%	500mL
R110705	Rosolic acid	603-45-2	Indicator	5g/25g/100g
R299257	Rosolic acid Indicator	603-45-2	0.5% in 50% Ethanol	100mL
A196528	Azo Violet Indicator	74-39-5	0.1% (w/v) Alcoholic Solution	125mL
L112786	Litmus	1393-92-6	Indicator (pH 5-8)	25g/100g/500g
T100508	Tetrabromophenol blue	4430-25-5	IND	1g/5g
B432646	Bromothymol blue sodium salt	34722-90-2	indicator water-soluble ACS	10g
B100251	Bromothymol blue	76-59-5	acid-base indicator	25g/100g
B141383	Bromophenol red	2800-80-8	Indicator	1g/5g/25g/100g
B109645	Bromophenol blue	115-39-9	Indicator	10g/25g/50g/250g
B113314	Bromophenol blue sodium salt	34725-61-6	Indicator	5g/10g/50g/100g
B196453	Bromophenol blue indicator	115-39-9	0.1% (W/V) in isopropyl alcohol	500mL
B100222	Bromocresol green	76-60-8	Indicator (pH 3.8-5.4)	5g/10g/25g/100g/500g
B406276	Bromocresol green		-	100mL/500mL
B106063	Bromocresol green sodium salt	62625-32-5	Indicator	5g/25g/100g
B196439	Bromocresol green as indicator	76-60-8	0.1% (w/v) in water	100mL/500mL
B101194	Bromocresol purple	115-40-2	IND	5g/10g/25g/100g
B196443	Bromocresol purple-bromothymol blue mixed indicator	115-40-2	0.2% (w/v) in methanol	500mL
B136139	Bromochlorophenol Blue	2553-71-1	Dye content 95 %	250mg/1g/5g
A354952	Pigment Blue 61	1324-76-1	-	1g/5g/25g
E121941	Ethyl orange	62758-12-7	Indicator	10g/25g
E299261	Ethyl orange indicator	62758-12-7	0.1%	100mL

Redox Indicator

Item No.	Product	CAS	Specification/Purity	Package
P160787	Phenolphthalin [for redox indicator]	81-90-3	>98.0% (HPLC)(T)	25g/100g/500g
D100398	Diphenylaminesulfonic acid sodium salt	6152-67-6	Indicator	25g/100g/500g
D299249	Diphenylaminesulfonic acid sodium salt indicator	6152-67-6	0.2%	100mL
M190219	Methylene Blue hydrate	122965-43-9	96%	5g/25g/100g/500g
M425109	Methylene blue	61-73-4	10mM in DMSO	1mL
M102719	Methylene blue	7220-79-3	Indicator	25g/100g/500g/2.5kg
M102717	Methylene blue	7220-79-3	Pure, for Biological Stain, $\geq 90.0\%$ (HPLC)	1g/5g/25g/100g/500g
M433395	Methylene blue (C.I. 52015)	7220-79-3	Reag. Ph Eur	10g/100g
M102715	Methylene blue stain for DNA	7220-79-3	100X DNA STAIN	25mL
C100360	Chromotropic acid disodium salt dihydrate	5808-22-0	ACS	5g/25g/100g
I304348	Indigotrisulfonic Acid Potassium Salt	67627-18-3	$\geq 55\%$ (HPLC)	250mg/1g/5g
P397586	Phloroglucinol	108-73-6	2% (w/v) Alcoholic	100mL
M196882	Malachite Green, Oxalate	2437-29-8	0.05% (w/v) in water	500mL
T106851	TBPE	62637-91-6	Indicator	1g/5g
D141270	Diphenylamine	122-39-4	1000 μ g/ml, in Purge and Trap Methanol	1mL/1.2mL

Metal Ion Indicator

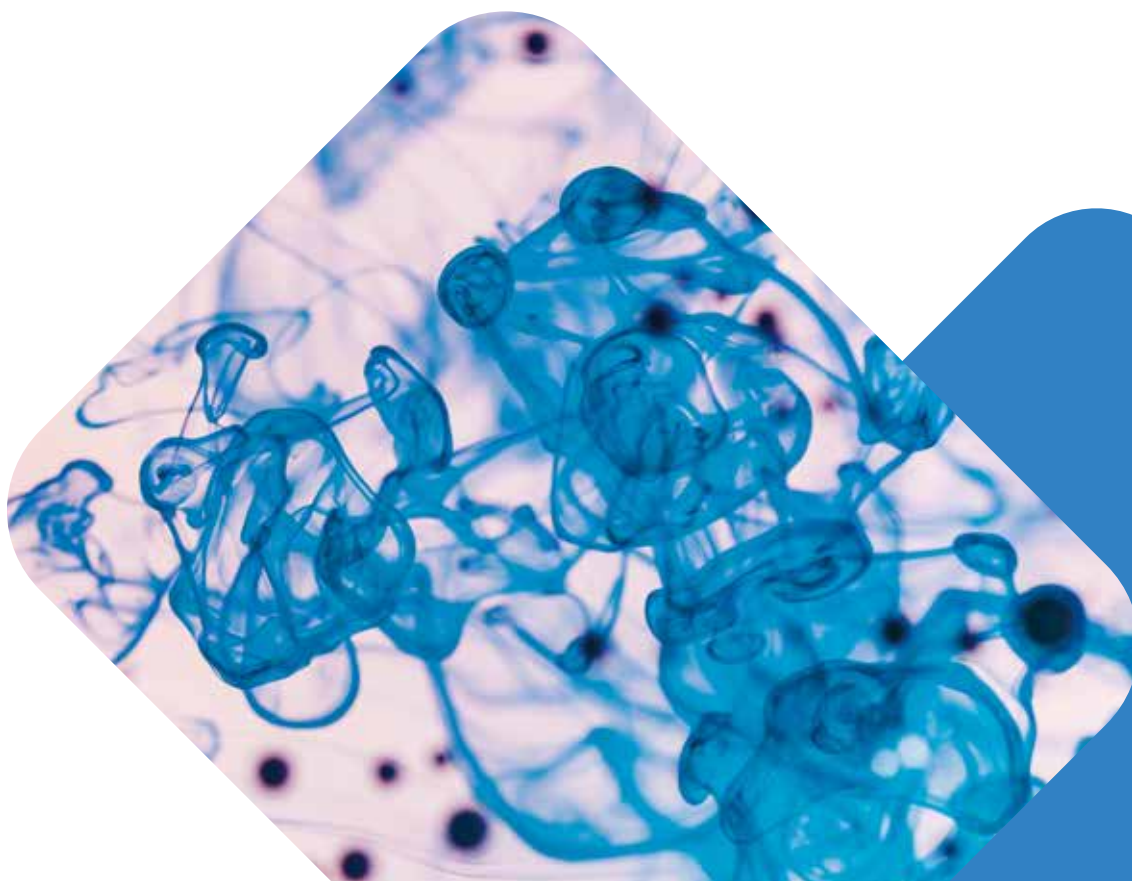
Item No.	Product	CAS	Specification/Purity	Package
T121942	Thymolphthalein complexon	1913-93-5	-	1g/5g
C106349	Calmagite	3147-14-6	Indicator	1g/5g/25g/100g
C196460	calmagite	3147-14-6	0.05% (w/v) in water	500mL
C196462	calmagite	3147-14-6	1%	500mL
E196478	Eriochrome black T	1787-61-7	1% (w/w) in Sodium chloride	100g/500g

Item No.	Product	CAS	Specification/Purity	Package
E196477	Eriochrome black T	1787-61-7	Soluble in triethanolamine, hard water indicator	500mL
P105817	1-(2-Pyridylazo)-2-naphthol	85-85-8	AR, 90.0%	1g/5g/25g/100g
A100195	Alizarin red	130-22-3	Indicator	25g/100g/500g/2.5kg
A308010	Alizarin red	130-22-3	≥ 80.0% (HPLC)	25g/100g/500g/2.5kg
A196436	Alizarin red	130-22-3	1% (w/v) in water	125mL/500mL
T299262	Titan yellow indicator	1829-00-1	0.05%	100mL
X100265	Xylenol Orange tetrasodium salt	3618-43-7	Reagent Grade	10g/50g/250g
E105019	Eriochrome® Blue Black R	2538-85-4	Indicator	25g/100g/500g
M108749	Methyl thymol blue complexon	1945-77-3	Dye content 80 %	5g/25g
M108748	Methylthymol Blue Sodium Salt	1945-77-3	AR	5g/25g
P169580	Pyrogallol Red	32638-88-3	95%	200mg/250mg/1g/5g
R100231	Rhodizonic acid sodium salt	523-21-7	90%	5g/25g/100g
M110711	Magneson I	74-39-5	AR	25g/100g/500g
H104306	Hematoxylin	517-28-2	for microscopy (Hist.), indicator (pH 5.0-6.0)	10g/50g
H432819	Hematoxylin	517-28-2	≥ 98%	25g/100g/5×100g
P432361	Phthalein purple	2411-89-4	metal indicator Reag. Ph Eur	1g/5g/10g/25g
C303141	Copper PAN	23299-85-6	-	1g/10g
S121928	Sulfanilic acid azochromotrop	23647-14-5	AR	5g/25g
N170560	Neocuproine	484-11-7	98%	1g/5g/25g/100g

Fluorescent Indicator

Item No.	Product	CAS	Specification/Purity	Package
C432128	Calcein indicator	1461-15-0	for metal determination	1g/5g
R105623	Rhodamine 6G	989-38-8	Biological stain	25g/100g/500g/1kg
F100007	Fluorescein	2321-07-5	AR, 90%	25g/100g/250g/500g
F422748	Fluorescein	2321-07-5	10mM in DMSO	1mL
F299344	Fluorescein sodium salt	518-47-8	70%	25g/100g/500g

Item No.	Product	CAS	Specification/Purity	Package
F299258	Fluorescein indicator	2321-07-5	0.5%	100mL
F348725	Fluorescence indicator green	68611-47-2	-	5g/10g/50g
D164506	2',7'-Dichlorofluorescein	76-54-0	98%	1g/5g/25g
E100232	Eosin B	548-24-3	90%	5g/25g/100g
Q299398	Quinaldine Red indicator	117-92-0	1.0-2.2	100mL





Contact us

 +1 (833) 552-7181

 www.aladdinsci.com

 14078 Meridian Parkway, Riverside, CA. 92518 USA

