

aladdin[®]
S C I E N T I F I C



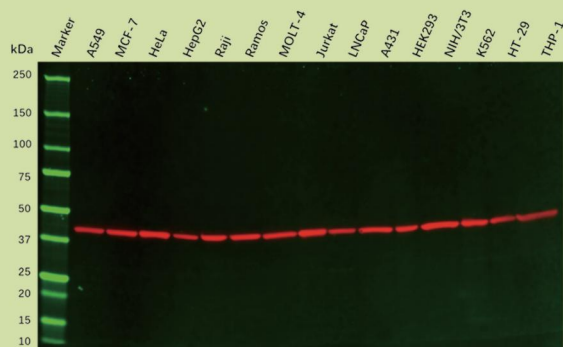
The Antibody Compendium

From Basics to Advanced Applications

www.aladdinsci.com

Antibodies also known as immunoglobulins, are proteins produced by the immune system in response to the presence of foreign substances. Antibodies have different applications in various fields, including medicine, research, diagnosis and therapy. Aladdin has introduced high-quality antibodies in stock that are clearly named and specified. Our antibodies have good specificity, high sensitivity, strong stability, and are suitable for a variety of general validation platforms.

Validation for Western blot

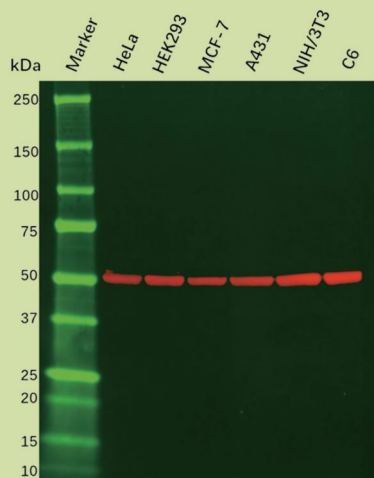


Western Blot - beta Actin Mouse mAb [2D10] (Ab155822)

All lanes : beta Actin Mouse mAb (Ab155822) at 0.1 μ g/mL.
Lysates at 20 μ g per lane.

Predicted band size: 42 kDa

Observed band size: 42 kDa

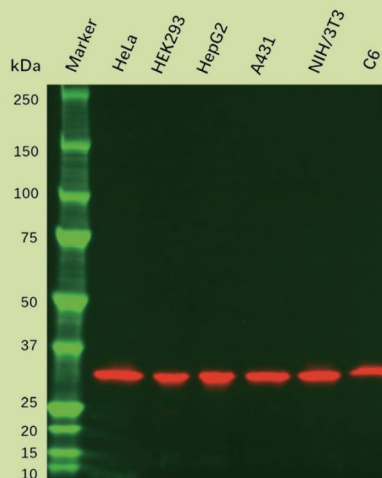


Western Blot - beta Tubulin Mouse mAb [2F1] (Ab155823)

All lanes : beta Tubulin Mouse mAb [2F1] (Ab155823) at 0.1 μ g/mL.
Lysates at 20 μ g per lane.

Predicted band size: 49 kDa

Observed band size: 50 kDa



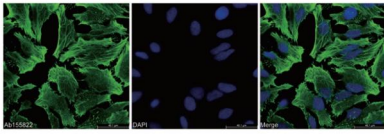
Western Blot - PCNA Mouse mAb [3D7] (Ab155826)

All lanes : PCNA Mouse mAb [3D7] (Ab155826) at 0.5 μ g/mL.
Lysates at 20 μ g per lane.

Predicted band size: 29 kDa

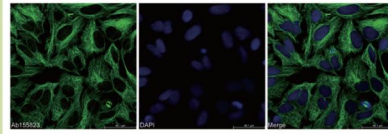
Observed band size: 29 kDa

Validation for Immunocytochemistry/Immunofluorescence



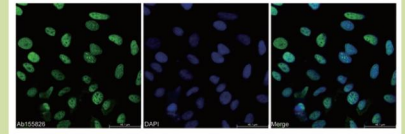
Immunocytochemistry / Immunofluorescence - beta Actin Mouse mAb [2D10] (Ab155822)

Ab155822 staining beta Actin in HeLa cells by Immunocytochemistry/Immunofluorescence. Cells were fixed in methanol. Primary antibody was used at 0.5µg/mL. An Alexa Fluor 488 conjugated Goat Anti-mouse IgG was used as the secondary antibody at a 1/1000 dilution.



Immunocytochemistry / Immunofluorescence - beta Tubulin Mouse mAb [2F1] (Ab155823)

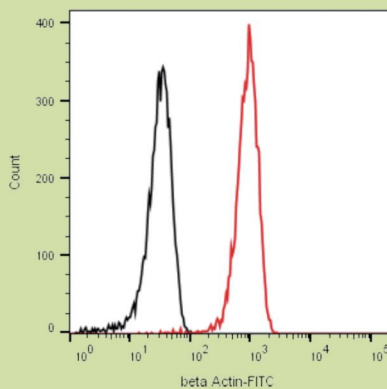
Ab155823 staining beta Tubulin in HeLa cells by Immunocytochemistry/Immunofluorescence. Cells were fixed in methanol. Primary antibody was used at 0.5µg/mL. An Alexa Fluor 488 conjugated Goat Anti-mouse IgG was used as the secondary antibody at a 1/1000 dilution.



Immunocytochemistry / Immunofluorescence - PCNA Mouse mAb [3D7] (Ab155826)

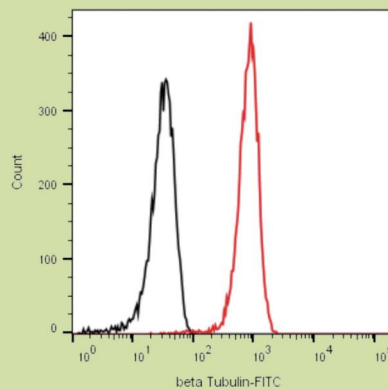
Ab155826 staining PCNA in HeLa cells by Immunocytochemistry/Immunofluorescence. Cells were fixed in methanol. Primary antibody was used at 0.5µg/mL. An Alexa Fluor 488 conjugated Goat Anti-mouse IgG was used as the secondary antibody at a 1/1000 dilution.

Validation for Flow Cytometry



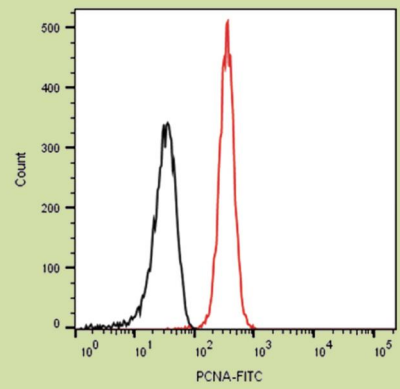
Flow Cytometry (Intracellular) - beta Actin Mouse mAb [2D10] (Ab155822)

Flow Cytometry analysis of HeLa cells labeling beta Actin with purified Ab155822 at 0.5µg/mL-Red. Cells were fixed and permeabilized with 100% methanol. A Goat Anti-Mouse IgG H&L (FITC) (Ab156254) was used as the secondary antibody. Unlabeled control - Black.



Flow Cytometry (Intracellular) - beta Tubulin Mouse mAb [2F1] (Ab155823)

Flow Cytometry analysis of HeLa cells labeling beta tubulin with purified Ab155823 at 0.5µg/mL-Red. Cells were fixed and permeabilized with 100% methanol. A Goat Anti-Mouse IgG H&L (FITC) (Ab156254) was used as the secondary antibody. Unlabeled control - Black.

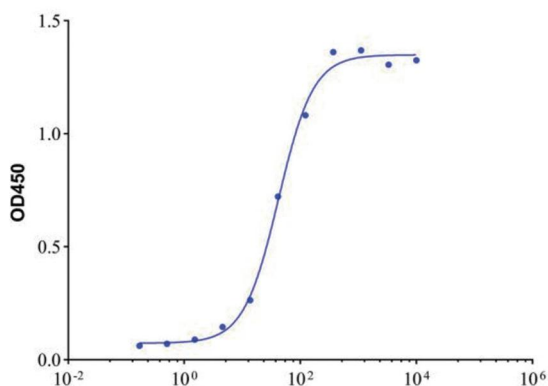


Flow Cytometry (Intracellular) - PCNA Mouse mAb [3D7] (Ab155826)

Flow Cytometry analysis of HeLa cells labeling PCNA with purified Ab155826 at 0.25µg/mL-Red. Cells were fixed and permeabilized with 100% methanol. A Goat Anti-Mouse IgG H&L (FITC) (Ab156254) was used as the secondary antibody. Unlabeled control - Black.

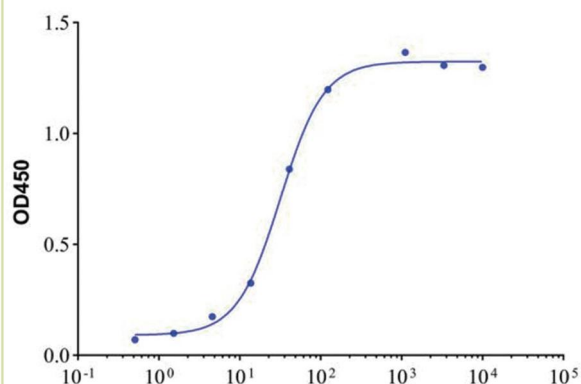
The Best-known Products - Matched Antibody Pairs

Ab169474 - Recombinant CY211 Antibody



Specification: Recombinant(25A1); Mouse Anti-Human CY211 Antibody; Capture antibody, ELISA, CLIA; Unconjugated

Ab169479 - Recombinant CY211 Antibody



Specification: Recombinant(22C4); Mouse Anti-Human CY211 Antibody; Detection antibody, ELISA, CLIA; Unconjugated

Featured Primary Antibodies

Cat. No	Product Name	Type	Clone	Source	Species Reactivity	Recommendation
A412017	CD25 Rat mAb	Monoclonal	PC-61.5.3	Rat	Mouse	Flow
Ab008098	Aldosterone Mouse mAb	Monoclonal	1D2	Mouse	Human	ELISA, CLIA
Ab088587	AMF Mouse mAb	Monoclonal	1B7D7	Mouse	Human	WB, IHC, IF/ICC, ELISA
Ab088935	Annexin A1/ANXA1 Mouse mAb	Monoclonal	2F1	Mouse	Human, Mouse, Monkey	ELISA, WB, IHC
Ab095961	CEBPA Mouse mAb	Monoclonal	4E10	Mouse	Human	WB, Flow, ELISA
Ab112308	KMT1E/SETDB1 Mouse mAb	Monoclonal	5H6A12	Mouse	Human, Mouse, Monkey	WB, ICC, IF, ELISA
Ab155822	beta Actin Mouse mAb	Monoclonal	2D10	Mouse	Human, Mouse, Rat	WB, Flow, IF/ICC, ELISA
Ab155823	beta Tubulin Mouse mAb	Monoclonal	2F1	Mouse	Human, Mouse, Rat	WB, Flow, IF/ICC, ELISA
Ab155826	PCNA Mouse mAb	Monoclonal	3D7	Mouse	Human, Mouse, Rat	WB, Flow, IF/ICC, ELISA

Matched Antibody Pairs

Cat. No	Product Name	Application	Type	Clone	Source	Recommendation
Ab005448	TSH	Detection	Recombinant	26C5	Mouse	CLIA, FIA
Ab005598	TSH	Capture	Recombinant	38C7	Mouse	CLIA, IF/ICC
Ab005432	Troponin I/TNNI3	Detection	Recombinant	31F1	Mouse	GICA, LF, FIA
Ab005500	Troponin I/TNNI3	Capture	Recombinant	23C12	Mouse	FIA
Ab005500	Troponin I/TNNI3	Detection	Recombinant	23C12	Mouse	GICA, LF
Ab005499	Troponin I/TNNI3	Capture	Recombinant	24A5	Mouse	GICA, LF
Ab005500	Troponin I/TNNI3	Detection	Recombinant	23C12	Mouse	GICA, LF
Ab005748	Troponin I/TNNI3	Capture	Recombinant	35C8	Mouse	GICA, LF, FIA
Ab005500	Troponin I/TNNI3	Detection	Recombinant	23C12	Mouse	GICA, LF
Ab005751	Troponin I/TNNI3	Capture	Recombinant	26G2	Mouse	GICA, LF
Ab008942	Thyroxine	Detection	Recombinant	22B1	Mouse	CLIA, IF/ICC
Ab008942	Thyroxine	Capture	Recombinant	22B1	Mouse	CLIA, IF/ICC
Ab130169	TAG72	Detection	Recombinant	29C4	Mouse	ELISA, CLIA
Ab169487	TAG72	Capture	Recombinant	25D9	Mouse	ELISA, CLIA
Ab127166	SerpinB3/SCCA	Detection	Recombinant	25F7	Mouse	ELISA, CLIA
Ab127167	SerpinB3/SCCA	Capture	Recombinant	22E3	Mouse	ELISA, CLIA
Ab008099	ProGRP	Detection	Recombinant	21D1	Mouse	ELISA, CLIA
Ab008100	ProGRP	Capture	Recombinant	27H3	Mouse	ELISA, CLIA
Ab007922	Pepsinogen I	Detection	Recombinant	31F2	Mouse	ELISA, CLIA
Ab007923	Pepsinogen I	Capture	Recombinant	21A6	Mouse	ELISA, CLIA
Ab008803	Luteinizing Hormone	Detection	Recombinant	23A7	Mouse	CLIA, GICA, FIA
Ab113723	Luteinizing Hormone	Capture	Recombinant	33C3	Mouse	CLIA, GICT, IF/ICC

Cat. No	Product Name	Application	Type	Clone	Source	Recommendation
Ab007972	H-FABP	Detection	Recombinant	24F1	Mouse	ELISA, GICA, LF, FIA
Ab107394	H-FABP	Capture	Recombinant	26H2	Mouse	ELISA, CLIA, FIA
Ab107124	HE4	Detection	mAb	2E11	Mouse	ELISA, CLIA
Ab107125	HE4	Capture	Recombinant	25B3	Mouse	ELISA, CLIA
Ab008172	D-Dimer	Detection	Recombinant	33A6	Mouse	ELISA, CLIA, GICA, LF, FIA
Ab008121	D-Dimer	Capture	Recombinant	32D2	Mouse	ELISA, CLIA, GICA, LF, FIA
Ab169479	CY211	Detection	Recombinant	22C4	Mouse	ELISA, CLIA
Ab169474	CY211	Capture	Recombinant	25A1	Mouse	ELISA, CLIA
Ab007319	CEACAM5	Detection	mAb	3E3	Mouse	ELISA, CLIA
Ab095938	CEACAM5	Capture	Recombinant	37C4	Mouse	ELISA, CLIA
Ab116378	CA153	Detection	Recombinant	25A3	Mouse	ELISA, CLIA
Ab005519	CA153	Capture	Recombinant	27B9	Mouse	ELISA, CLIA
Ab005424	PSA	Detection	mAb	3B5	Mouse	ELISA, CLIA
Ab005494	PSA	Capture	mAb	3D2	Mouse	ELISA, CLIA
Ab008129	PLA2G7	Detection	mAb	18A6	Mouse	GICA, FIA
Ab008130	PLA2G7	Capture	mAb	11G5	Mouse	GICA, FIA
Ab005528	CA125	Detection	mAb	4A5	Mouse	ELISA, CLIA
Ab005524	CA125	Capture	mAb	4F8	Mouse	ELISA, CLIA
Ab007318	AFP	Detection	mAb	2H3	Mouse	ELISA, CLIA
Ab007317	AFP	Capture	Recombinant	27C9	Mouse	ELISA, CLIA
Ab007934	Progesterone	Detection	Recombinant	36H1	Mouse	ELISA, CLIA
Ab007934	Progesterone	Capture	Recombinant	36H1	Mouse	ELISA, CLIA
Ab005526	CA199	Detection	Recombinant	30C8	Mouse	ELISA, CLIA
Ab005526	CA199	Capture	Recombinant	30C8	Mouse	ELISA, CLIA

Cat. No	Product Name	Application	Type	Clone	Source	Recommendation
Ab007933	Testosterone	Detection	Recombinant	27B4	Mouse	ELISA, CLIA
Ab007933	Testosterone	Capture	Recombinant	27B4	Mouse	ELISA, CLIA
Ab008403	E2	Detection	Recombinant	27F11	Mouse	ELISA, CLIA
Ab008403	E2	Capture	Recombinant	27F11	Mouse	ELISA, CLIA

Featured Secondary Antibodies

Cat. No	Product Name	Type	Source	Species Reactivity	Recommendation
Ab179001	Goat Anti-Mouse IgG H&L (HRP)	Polyclonal	Goat	Mouse	WB, ELISA
Ab179002	Goat Anti-Mouse IgG H&L (Biotin)	Polyclonal	Goat	Mouse	WB, IF/ICC, ELISA
Ab179003	Goat Anti-Mouse IgG H&L (FITC)	Polyclonal	Goat	Mouse	IF/ICC, Flow Cytometry
Ab176442	Goat Anti-Rabbit IgG H&L (Biotin)	Polyclonal	Goat	Rabbit	WB, ELISA
Ab176443	Goat Anti-Rabbit IgG H&L (HRP)	Polyclonal	Goat	Rabbit	WB, ELISA
Ab176444	Goat Anti-Rabbit IgG H&L (APC)	Polyclonal	Goat	Rabbit	IF/ICC
Ab175835	Goat Anti-Human IgG (HRP)	Polyclonal	Goat	Human	WB, ELISA
Ab175832	Goat Anti-Human IgG (Biotin)	Polyclonal	Goat	Human	WB, IF/ICC, Flow Cytometry, ELISA
Ab170181	Goat Anti-Chicken IgY H&L (HRP)	Polyclonal	Goat	Chicken	WB, ELISA
Ab170178	Goat Anti-Chicken IgY H&L (Biotin)	Polyclonal	Goat	Chicken	ELISA
rp155876	Streptavidin (HRP)	-	-	-	Flow, IF
np156148	Streptavidin (FITC)	-	-	-	ELISA, WB

United States

Aladdin Scientific Corporation

14078 Meridian Parkway,
Riverside, CA 92518,
USA

Tel: +1 (833) 552-7181

Purchasing Email: sales@aladdinsci.com

Technical Support: support@aladdinsci.com

Customer Support: custserv@aladdinsci.com

Germany

Aladdin Biochem Deutschland GmbH

Westring 2,
33142 Büren, Nordrhein-Westfalen,
Germany

Tel: +49 2951 9383958

Technical Support: TechSupport.Eu@aladdinsci.com

Customer Support: CustomerSupport.Eu@aladdinsci.com

Ireland

Aladdin Technology Limited

Bay 117, Shannon Free Zone,
Shannon, Co. Clare,
Ireland

Tel: +353 530791815

Technical Support: TechSupport.Eu@aladdinsci.com

Customer Support: CustomerSupport.Eu@aladdinsci.com

aladdin[®]
S C I E N T I F I C

<https://www.aladdinsci.com/>

